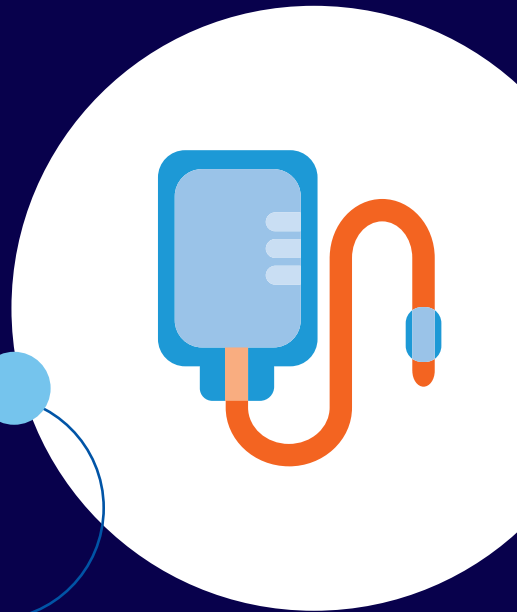


Tzielid[®] ▽ (teplizumab)

infusion tracker



This printable infusion tracker is for patients who have been prescribed treatment with Tzielid (teplizumab), or their caregivers. This infusion tracker is not intended to be a substitute for medical advice.



Scan the QR code to access the **Patient Information Leaflet**. You should read this as it contains important safety information.



Scan the QR code to access the **Patient Guide**. You may have been given this by your doctor and you should read it.

Tzielid is a medicine used to delay the start of Stage 3 Type 1 diabetes. This condition happens when the body cannot make enough insulin on its own and may need insulin injections. This medicine is used in adults and children aged 8 years and older who have Stage 2 Type 1 diabetes.

If you have any questions on how Tzielid works or about your treatment with Tzielid, ask your doctor.

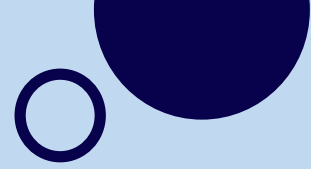
Reporting side effects

If you get any side effects, talk to your doctor, pharmacist or nurse. This includes any possible side effects not listed in the package leaflet. You can also report side effects directly via the Yellow Card Scheme at www.mhra.gov.uk/yellowcard or search for MHRA Yellow Card in the Google Play or Apple app Store.

Alternatively, you can report side effects to Sanofi on Tel: 0800 0902 314 or send via email to UK-drugsafety@sanofi.com.

By reporting side effects, you can help provide more information on the safety of this medicine.

▽ This medicine is subject to additional monitoring. This will allow quick identification of new safety information. You can help by reporting any side effects that you may get. See www.mhra.gov.uk/yellowcard for how to report side effects.



Infusion schedule

Keep on top of your infusion schedule with this helpful infusion tracker.

Infusion tracker

Day 1



Day 2



Day 3



Day 4



Day 5



Day 6



Day 7



Day 8



Day 9



Day 10



Day 11



Day 12



Day 13



Day 14



Notes

What if I still have questions?

If you have any questions about your treatment with Tzield, ask your doctor. You can use the space below to make a note of your doctor's contact information.

Doctor's name: _____

Phone number: _____

Homecare phone number: _____